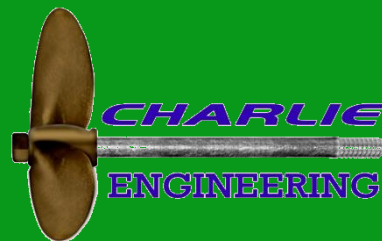


Davit Arm Line Hauler



The davit arm line hauler is used to pull fishing wire or rope.

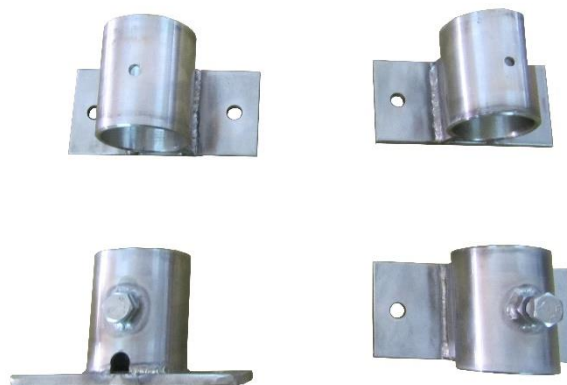


- The davit arm line hauler is used on all types of fishing vessels.
- The hauler can be powered by a 100cc, 125cc, 200cc or 250cc hydraulic motor.
- The motor is operated by means of a hydraulic control valve which can change the rotation as well as the speed of the motor.
- Wire or rope is automatically pulled out from the sheave by means of a knife.
- Pressing arm is used to press the fishing rope in the sheave.
- Davit is reinforced by means of an angle support.
- Manufactured from Stainless steel structure and Aluminium casting sheave.
- Can be installed on port or starboard side
- Two types of mountings available:
 - Side and bottom mounting.
 - Double side mounting.

Specifications:

Hydraulic motor:	100cc, 125cc, 200cc, 250cc
Control valve:	1/2" BSP port size with manual lever for forward, reverse and neutral operation
Hydraulic pump:	25 lts @ 1000rpm
Pulling capacity:	320 Kg (with Ø 250mm sheave)
Weight:	36Kg
Pulling speed:	95m/min
Rope thickness:	1mm-15mm (other thickness available)
Material:	Marine Aluminium sheave and stainless steel structure
Mounting:	1. Side and Bottom mounting 2. Double side mounting

Accessories



Side and bottom mounting

Double side mounting